



Introduction

Hope you had a nice day and enjoyed the tours.

I am going to give you a quick update about what is happening at the British Library the moment

Contents



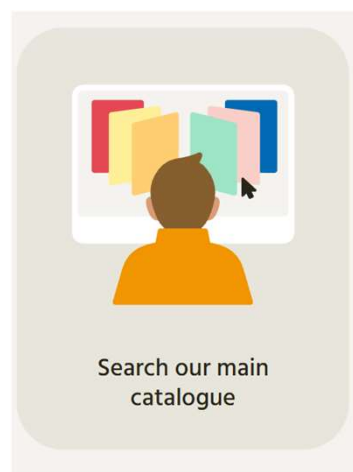
- Alma-Where we are now
- Document Supply
- General Updates
- Building Projects

As we have just marked the second anniversary of the cyber-attack we are finally seeing some new systems coming in to help on our road to service recovery.

- As you are probably aware we are in the middle of adopting ALMA and Primo. I will cover where we are in our journey and what the next steps are
- What this means for our document supply service
- Some more general Updates
- What is happening with our major building projects

ALMA

- Catalogue
- Reading rooms
- Document Supply



So, starting with ALMA, the first thing that is coming on board is the catalogue.

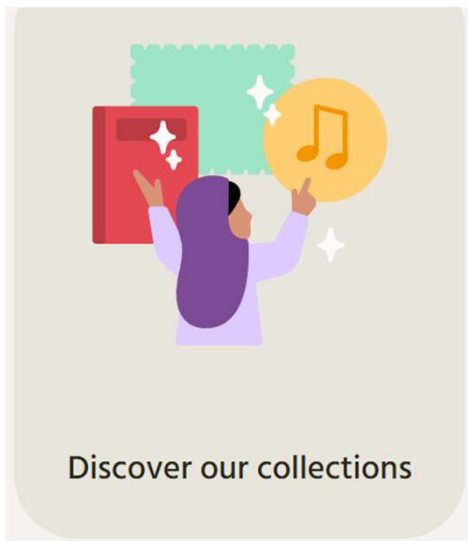
1. We are currently working on the testing of our data transfer from Aleph to primo. This involves several passes of data between the systems and some rigorous testing to ensure it all works. We are also in the middle of training on the new catalogue so we can catch-up on the ingest of all the new material we have received in the last 2 years, particularly Legal Deposit. The new catalogue will be easier to use and more dynamic than the old one. The catalogue is due to go live on the 8th December.
2. Reading rooms- To make the move from our current interim catalogue and ordering system to ALMA we need recall all the stock items that are currently issued on our IBRs system and put them back into storage before they can be re-issued on ALMA. This means all staff and reader items will be recalled in the week before go-live and nothing can be issued until after the 8th December. The reading rooms will be open for personal study only for that week as no items will be able to be ordered or kept on reserve.

The good news is that once the new system is up and running there will be more access to online resources and the move to the new catalogue will improve the

ordering for readers. It will allow logging into a system, ordering multiple items at once and the ability to extend items in the reading room remotely. The new system will also send email updates to readers telling them when their items are in process, failed or in the reading rooms ready for collection which the old system did not.

1. We will be moving to Rapido but this work will start in earnest after the work on the catalogue and primo have been completed. We have nearly completed our requirements for the service. This work has been helped by visits and conversations with 3 libraries who currently use Rapido and their help has been greatly appreciated. We are still aiming for a Spring launch but it will be phased. We are still in conversations with partners to ensure all LMS users will be able to use our services going forward.

Document Supply



- Loans
- Worldwide Searches
- EHESS
- Content

What will document supply look like on Rapido and Rapid ILL

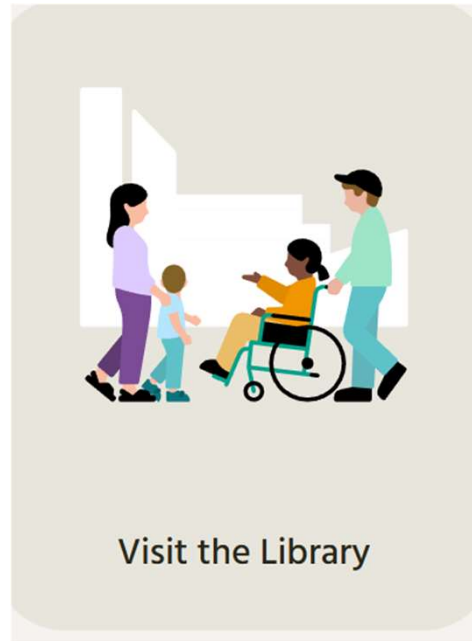
1. Loans. We plan to continue to have a 12-week loan period on the new system which is the same as now. We will not be offering renewals initially but both the loan period and renewal policy can and will be reviewed once we are up and running and understand the possibilities in the system
2. Worldwide/ location Searches- Due to the reduced demand and the cost of the service, pre cyber, and the fact that there are so many platforms now , such as OCLC, Rapid ILL etc, that now offer the chance to search and request from other libraries we have decided that this is one of the services we will not be bringing back in the new world. Sorry for anyone who used to use it.
3. EHESS- We are working with the CLA to improve the workflows for the EHESS service and how the ordering and reporting should work. I think it is fair to say this will not be ready for the Spring launch of Rapido so the manual EHESS service you are currently experiencing will be around for a little bit longer. We will continue to offer the CFP service through the EHESS service with the help of the CLA. With regards to the reintroduction of the CFP service for normal document supply we are working with Exlibris and other partners to work out how we can provide it by optimizing the workflows but minimizing the complexities. Previously we had over 80 separate publisher licenses as well as

those with rights organization such as the CLA or CCC. It was a administrative nightmare and one we are eager to avoid going forward.

4. Finally, the introduction of the new catalogue has meant re-analyzing the restrictions we had on some material held in the BL. We can open more of our collections for document supply orders so hopefully you should see the success rate of your BL requests increase

General

- Reading rooms
- EThOS
- Exhibitions



www.bl.uk

5

A few more general updates

Reading Rooms

- Reading rooms now have computers back. They are limited on what can be accessed at the moment with only BNA and a couple of other resources but this will increase after the move to ALMA.
- Readers also now have the ability to scan items onto memory sticks from our collections
- The microfilm readers are about to be networked again so extracts from microfilm can be copied and sent via email to the readers

Ethos

- There will be an interim Ethos platform by the end of the year.
- The interim EThOS platform will not have files but will link out to each university's repository, where you may be able to download individual theses, if the university has made it available.

- In 2026, we will begin the next phase of work to restore file downloads and automated requests for digitisation. We will be consulting with participating universities and EThOS users (including other discovery services) to ensure that we are meeting the community's needs.
- We can do digitisation requests for 'option 1' unis, i.e. ones where universities pay for the digitisation of theses (but not where the uni is option 2 and the user pays for this request).
- All theses that are digitised during this period will be uploaded to EThOS when it is fully restored.
- We will be sending out information ahead of the interim platform going live to the contacts we had prior to the cyberattack, but I am aware that some of those contact details are probably out of date now. If anybody wanted to update their address for EThOS, they should contact customer@bl.uk to do so.

Exhibitions.

- While on site you may want to pop into our treasures Gallery which has just re-opened following 6 weeks closure to update the display cabinets to ensure correct environmental conditions for some of our more delicate exhibits
- Secret Maps has opened and is apparently very interesting. It includes maps that were designed to protect treasures and war maps hiding secret strategic locations. This runs to 18th January.

Building Projects



www.bl.uk

6

1. Work continues on our new buildings.
2. The building at Boston Spa is coming along with completion due in Spring 2026. All nine cranes have now been installed and they will handle over 200,000 storage containers. The windows have been installed for the 2 gallery viewing points with a lower window showing the conveyors and a high platform showing the 86 metre storage void. I am hoping this time next year we will be able to visit the building
3. We also have additional funding from the Foyle Foundation to create a permanent interactive display in the viewing gallery and a new Foyle learning centre at Boston Spa which will pave the way for our first dedicated public engagement programme at Boston Spa.

Thank you.

Joanne Cox